

Quick Sampling Guide

- **Two swabs are recommended per sampling area of ½ foot square.** The provided frame readily defines ½ foot square to facilitate the sampling procedure.
- If the sampling areas are door knobs, keyboards, etc., wipe twice with the provided swabs. Wiping can be done in any direction.

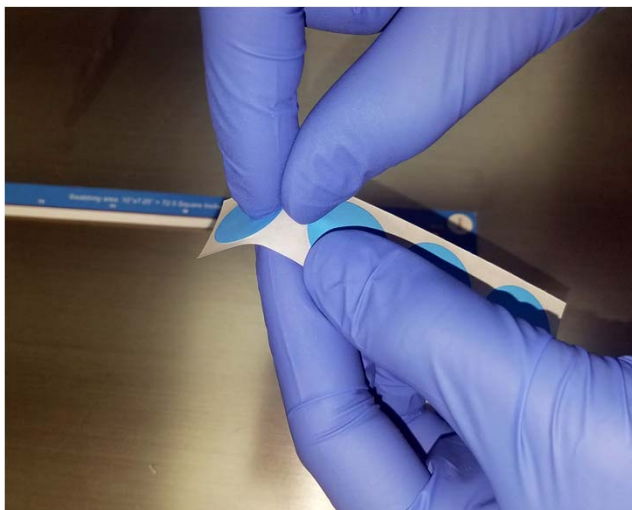
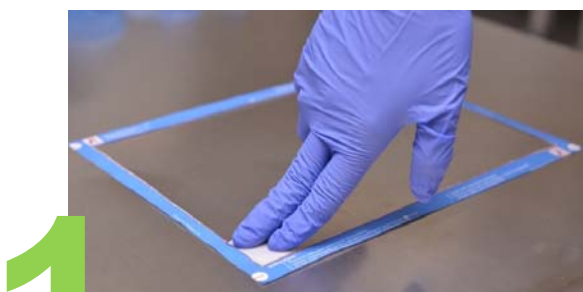
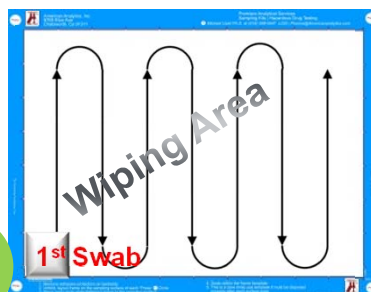


Figure: Applying the adhesive dots to position frame onto the intended wiping surface.

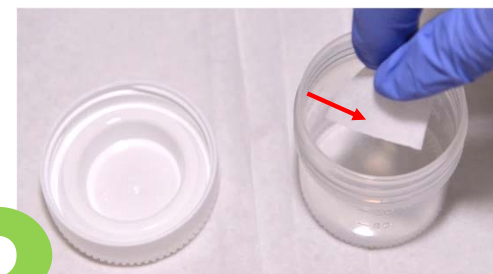
Quick Sampling Guide



1 Place the swab onto the intended wiping area and wipe continuously following either vertical or horizontal directions as shown in step 2 and 4, respectively.



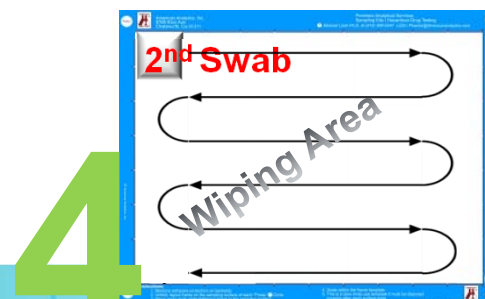
2 Wipe the 1st swab continuously in a vertical direction.



3 Without touching the outside of the container, place the 1st used swab into the container.



5 Without touching, place the 2nd used swab in the container. **DO NOT CAP THE CONTAINER YET!** Using **new gloves**, close the container with the lid.



4 Wipe the 2nd swab continuously in a horizontal direction.